






## **Gas Concentration Measurement, Work Zone Safety**



# GAZOTRACK<sup>TM</sup>

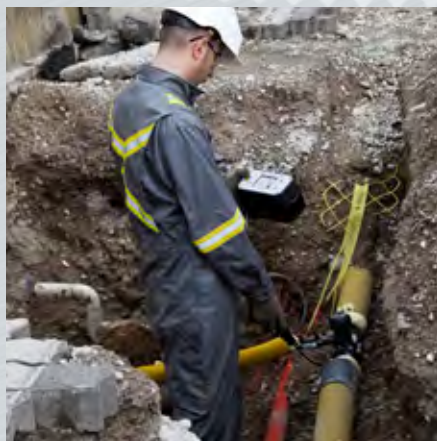
## Multifunction Gas Leak Detector

-  Simultaneous detection of up to four gases – CH<sub>4</sub> with infrared sensor, CO, O<sub>2</sub>, THT/TBM/H<sub>2</sub>S with electrochemical sensors
-  Reliable measurements in spite of temperature variations, no condensation formation
-  Personalised, intuitive and user-friendly interface
-  Event logging and transfer via Bluetooth® connection
-  Maintenance made easier using smart sensor technology

**GAZOMAT™** has extended its range of optical (NDIR) gas detectors with its new Gazotrack™ 4 device, which is a multigas detector with intelligent IR sensors for hydrocarbons and electrochemical sensors for toxic and odorant gases.

This new-generation handheld device is capable of detecting up to four gases at the same time, with a 100 ppm sensitivity limit for methane.

It offers an all-in-one solution that is extremely flexible and easy to use, meeting the safety and performance requirements of a large range of applications – safety interventions, bore holes, pipeline purging and filling, monitoring of networks in gas storage and transport installations, measurement of odorant gases, testing for toxic gases in potentially hazardous work zones.



### Measurement reliability

**A smart sensor using non-dispersive infrared (NDIR) technology to guarantee measurement efficiency:**

- Repeatable and reliable measurements
- Sensor immune to toxic compounds (for H<sub>2</sub>S, up to 200 ppm)
- Very quick response time, under 4 seconds
- Temperature regulation system integrated into the sensor for protection from high temperature and humidity variations - no condensation
- Lifespan above five years



### User friendly

- Immediate operation:
  - Start-up time below 30 seconds
  - No need for preliminary adjustment or setup
- Simplified interface with four control buttons
- Intuitive use with integrated applications\*
- Automatic event logging and transfer via Bluetooth® connection\*\*
- Visual alarms with flashing red LEDs accompanied by an audio signal
- Charger base for use in the office or in a vehicle
- Minimum 24-hour operating time

### Convenience and safety in ATEX

- Safe use in zones at risk of explosion - Certified for ATEX and IEC-Ex zones 0, 1 and 2
- Rugged design for use in extreme conditions
- Large display of measurements in values and bars on back-lit LCD screen
- Compact and lightweight design

### Failsafe Design

- Continuous self-testing
- Display of error messages with audio signal
- Device shutdown message in the event of a major fault

### Simplified maintenance and reduced costs

- Independent intelligent sensors with integrated circuitry, requiring no recalibration in normal conditions of use
- Quick replacement of sensors and filters, with no need for recalibration (maintenance by GAZOMAT™ -approved personnel only)
- Simple annual verification using the test kit
- Operating time before maintenance approximately 5,000 h.
- Two-year guarantee (electrochemical sensors not included)





## Equipment and accessories

Gazotrack™ 4 is supplied calibrated and ready for use. The following accessories are available:

1. Carry strap
2. Charger base designed specifically for the device and usable in a vehicle
3. 100-240VAC mains power supply unit
4. 12V-24V DC car power supply unit
5. Grip for sampling rod with integrated hydrophobic filter and dust filter
6. Short flexible sampling rod
7. Tip for short sampling rod
8. Long semi-rigid sampling rod
9. Tip for long sampling rod
10. One metre of flexible sampling tube for rod
11. Test kit including gas canister with pressure reducer valve:  
Gas : CH<sub>4</sub>, CO, O<sub>2</sub>, THT
12. Storage case that holds all the listed accessories, a set of dust filters and a set of hydrophobic filters



The Gazotrack™ 4 detector is available in a methane version and includes several application modes to be defined at the time of purchase and selected from a menu:

Operating Mode	Applications	Measurement scales	Sample display
 <b>Work Zone Safety</b>	<ul style="list-style-type: none"> <li>- <b>Testing for potentially explosive and toxic levels of gas</b> in work zones and in confined spaces (CH<sub>4</sub>, CO)</li> <li>- <b>Testing for hazardous concentration levels of toxic gases</b> (CO, O<sub>2</sub>)</li> <li>- <b>Leak detection</b> in indoor and outdoor installations (CH<sub>4</sub>, CO)</li> </ul>	<ul style="list-style-type: none"> <li>- LEL scale (0%-100% LEL) with maximum recorded measurement (MAX)</li> <li>- Manual changeover to % gas vol. scale</li> <li>- Simultaneous display of toxic gas measurement (for CO, scale 0 ppm-1000 ppm)</li> </ul>	
 <b>Work sites</b>	<ul style="list-style-type: none"> <li>- <b>Measurement of gas concentration</b> when pipes are filled with gas or cleared of gas (CH<sub>4</sub>, O<sub>2</sub>, THT)</li> <li>- <b>Bore holes:</b> Precise location of leakage points by measuring the gas concentration in bore holes (CH<sub>4</sub>)</li> <li>- <b>Measurement of odorant gases</b> (CH<sub>4</sub>, CO, O<sub>2</sub>, THT) in gas networks</li> </ul>	<ul style="list-style-type: none"> <li>- PPM scale (0-10,000 ppm)</li> <li>- Automatic changeover to LEL scale (0%-100% LEL), then gas scale (0%-100% gas vol.)</li> <li>- Maximum recorded measurement (MAX)</li> <li>- Simultaneous display of toxic gas measurement (gas dependent on device configuration)</li> </ul>	

The wide field of application of the device combined with its portability and ease of use and maintenance make Gazotrack™ 4 a multipurpose detector that can accompany and ensure the safety of all personnel working with gas, for a lower cost.

# TECHNICAL SPECIFICATIONS

## GAZOTRACK™

### Measurement scales and sensors

Type of gas	Sensor	Measurement range	Measurement scale	Sensitivity limit
Methane (CH <sub>4</sub> )	Infrared	0 ppm - 10,000 ppm, CH <sub>4</sub> 0% - 100% LEL CH <sub>4</sub> 0% - 100% vol. CH <sub>4</sub>	100 ppm - 10,000 ppm, CH <sub>4</sub> 1% - 100% LEL CH <sub>4</sub> 0,1% - 100% vol. CH <sub>4</sub>	100 ppm CH <sub>4</sub> 1% LEL CH <sub>4</sub> 0,1% vol. CH <sub>4</sub>
Carbon monoxide (CO)	Electrochemical	0 ppm - 1,000 ppm	1 ppm - 1,000 ppm	1 ppm
Oxygen (O <sub>2</sub> )	Electrochemical	0% - 30% vol. O <sub>2</sub>	1,0% - 29.9% vol. O <sub>2</sub>	0,1% vol. O <sub>2</sub>
Hydrogen sulphide (H <sub>2</sub> S)	Electrochemical	0 ppm - 200 ppm	1 ppm - 2,000 ppm	1 ppm
THT (C <sub>4</sub> H <sub>8</sub> S)	Electrochemical	0 - 100 mg/m <sup>3</sup>	1 - 100 mg/m <sup>3</sup>	1 mg/m <sup>3</sup>
TBM (C <sub>4</sub> H <sub>10</sub> S)	Electrochemical	0 - 100 mg/m <sup>3</sup>	1 - 100 mg/m <sup>3</sup>	1 mg/m <sup>3</sup>

- Calibration**
- Methane with automatic natural gas correction factor
  - Option : CO, O<sub>2</sub>, H<sub>2</sub>S/THT/TBM (maximum three gases can be selected)

- Power supply**
- Battery rechargeable lithium accumulator, 4800 mAh
  - Battery life 24 hours

- Charging Time**
- 5 hours

- Electric pump**
- Output ≥ 25 l/h

- Functions**
- **Data logging:**  
Automatic logging of events (date, time of switching on and off, and triggering of any alarms)
  - **Communication:**  
Bluetooth® 2.0 and RS232/USB connection for data transfer
  - **Alarms:**  
Four flashing red LEDs and audio signal
    - Hydrocarbons: alarm limits programmable according to ATEX regulations
    - Toxic gases: programmable alarm limits
    - Concentration level, battery low, faults

- Conditions of use**
- Temperature range: -10 °C to +40 °C  
If stored at boundary temperatures, allow 24 hours at ambient temperature to let the device stabilise before use
  - Relative humidity: 0% to 80% RH at 30 °C
  - Anti-condensation system: avoids false alarms with high temperature variations

- Storage conditions**
- Temperature range: -20 °C to +50 °C
  - Relative humidity: < 95% RH

- Physical characteristics**
- High-contrast TFT colour display screen with automatic backlighting (320 x 240 pixels)
  - Four waterproof control keys on the front
  - Housing made of impact resistant antistatic PA6 polyamide with carbon reinforcement
  - Anodised aluminium front
  - Display window made of high-strength ceramic glass
  - Weight: 1,1 kg
  - Dimensions : L 216 mm x W 110 mm x D 122 mm
  - Protection rating: IP 67 according to EN 60529

- Certifications**
- ATEX and IEC-Ex :  II 2 G Ex ia IIC T4 Gb



### After-sales service

GAZOMAT provides all customers with comprehensive product assistance and maintenance through its global service teams.

### GAZOMAT™ S.à.r.l.

11, rue de l'Industrie – BP 40101  
67403 Illkirch-Graffenstaden Cedex – France  
Phone: +33 (0)1 85 65 04 37  
Fax: +33 (0)1 85 65 04 87  
E-mail: info@gazomat.com  
www.gazomat.com

Authorized agent