



# 2024 Natural Gas & Pipeline Environmental Solutions



CORROSION & CATHODIC PROTECTION / ENVIRONMENTAL PRODUCTS / LEAK DETECTION  
HEATING & COOLING / HOT TAPPING & LINE STOPPING VALVES & MAINTENANCE / REHABILITATION & INSPECTION  
SEPARATION & FILTRATION / REMOTE MONITORING / SILENCING / PIGGING

KERR ENGINEERED SALES COMPANY



**FILTER SEPARATOR**



**BLOWDOWN SILENCER**



**AIR COOLED HEAT EXCHANGER**

## Peerless

A CECO Environmental Brand

**REPRESENTED SINCE 1952**

Peerless is the world leader in the design and supply of high efficiency gas and separation filtration equipment, fuel gas conditioning skids, gas odorization filtration and separation equipment. Filter-Separators provide economical, effective and highly efficient removal of large and small solid and liquid particles from gas streams to protect equipment and optimize processes.

[CECOENVIRO.COM/  
NATURAL-GAS-PIPELINE-SEPARATION](http://CECOENVIRO.COM/NATURAL-GAS-PIPELINE-SEPARATION)

## CECO Environmental Burgess-Aarding

**REPRESENTED SINCE 2008**

Burgess-Aarding offers a full range of industrial silencers used globally. The proven designs include vent and blowdown to atmosphere silencers, in-line control valve/regulator silencers, intake/exhaust for engines, compressors, fans and blowers, vacuum pump silencer-separators, and flare stack silencers.

[CECOENVIRO.COM/BURGESS-AARDING](http://CECOENVIRO.COM/BURGESS-AARDING)

## TEK-FINS

**NEW REPRESENTATION**

TEK-FINS is an industry leader in the design and manufacture of horizontal configuration air cooled heat exchangers for over 34 years. They serve a variety of markets and applications across the globe. TEK-FINS provides Air Cooled Heat Exchangers (ACHE), Finned Tubes, Parts, and Services for a variety of applications and industries.

[TEK-FINS.COM](http://TEK-FINS.COM)

# OVER 72 YEARS OF INDUSTRY LEADING SERVICES & SOLUTIONS



**PROSTOPP**



**PE QUICK CONNECT**



**STOPPLE TRAIN SERVICE**



**T.D. Williamson**  
Pipeline Performance™

**REPRESENTED SINCE 1952**

Over 100 years of relationships with pipeline owners and operators delivering comprehensive technologies, expertise and solutions.

### INTERVENTION & ISOLATION EQUIPMENT

- Hot Tapping equipment ½" thru 48"
- SHORTSTOPP® II, SHORTSTOPP 275/500, ProStopp™ DS Line Plugging Systems 1.25" - 12"
- POLYSTOPP® Quick Connect 4" - 12"
- STOPPLE Plugging Equipment 2" thru 42"
- Full Line of STOPPLE® and STOPPLE Plus Fittings and 3-WAY Tees

### INTERVENTION AND ISOLATION SERVICES

- Hot Tapping Services ½" to 60"
- SHORTSTOPP® and STOPPLE® Train Line Plugging Services from 2" to 102"
- Full Line of SHORTSTOPP®, and STOPPLE® Fittings
- Turn Key Services Includes Project Management, Welding, Fitting Installation, etc.
- Serving the Gas, Liquid Pipeline, Water/WW, and Industrial Markets



**GAZOSCAN**



**HOT CAT**



**FREEZ-FITER**



REPRESENTED SINCE **2017**

GAZOMAT™, a subsidiary of ECOTEC, specializes in the design, development, manufacturing and servicing of electronic detection equipment for the survey of gas distribution networks. INSPECTRA® Laser is a natural gas leak portable analyzer with laser spectroscopy. GAZOSCAN is a handheld remote methane leak detector (RMLD) with laser spectroscopy for inspections at a distance, up to 100 meters or 330 feet.

[GAZOMAT.COM/EN](http://GAZOMAT.COM/EN)



REPRESENTED SINCE **1963**

The world leader in flameless, catalytic, gas-fueled heaters and heater packages for space and item heating in hazardous locations. The line includes HOTCAT, a custom engineered natural gas line heater that applies a precise level of heat directly to the heat exchanger. HOTCAT uses Bruest's catalytic heater panels as the heat source. Catalytic heater panels convert the fuel gas to CO<sub>2</sub>, water vapor, and infrared heat with virtually no NO<sub>x</sub> in the process. Freez-Fiters family of pilot gas heaters safely and effectively heat low volumes of gas used by pilot regulators and instruments. Gas travels through the heat exchange coil to be heated by the infrared heat. In addition to heating pilot regulator supply gas, Freez-Fiters are suitable for applications requiring low volume of heated gas.

[BRUESTCATALYTICHEATERS.COM](http://BRUESTCATALYTICHEATERS.COM)

**800.245.3198**  
[KERENGINEEREDSALES.COM](http://KERENGINEEREDSALES.COM)  
[SALES@KERENGINEEREDSALES.COM](mailto:SALES@KERENGINEEREDSALES.COM)



**INTEGRATED PIGGING SOLUTIONS**

- Pipeline Pigs from Cleaning, Batching, Commissioning, to Displacement
- Pigging Systems & PIG-SIG® Pig Passage Indicators—standard and Non-Intrusive
- Quick Actuating, D2000® and Clamp Ring Closures

[TDWILLIAMSON.COM](http://TDWILLIAMSON.COM)



**CLEANING PIGS**



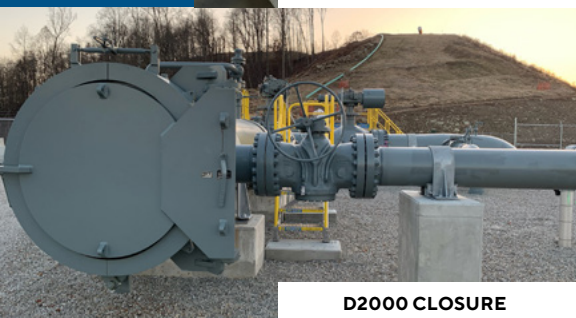
REPRESENTED SINCE **2017**

**METHANE MITIGATION TECHNOLOGY TO ACHIEVE EMISSION REDUCTION GOALS**

ZEVAC® (Zero Emission Vacuum and Compressor) is an OEM line of portable gas and liquid cross-compression equipment easily integrated into operations and maintenance plans as a safe, reliable, and scalable alternative to natural gas venting and NGL flaring. ZEVAC® equipment is tailored to meet the unique combinations of size, speed, pressure, portability, and price needed to maximize performance and efficiency.

NEW: ZD3 Closed Vent System Technology for vent gas recovery for compressor stations and meter & regulator stations.

[GETZEVAC.COM](http://GETZEVAC.COM)



**D2000 CLOSURE**

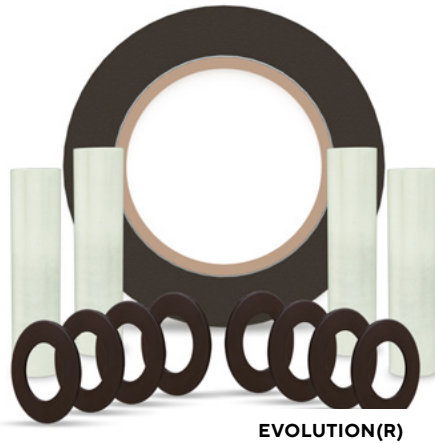


**DRAWDOWN QUADS**

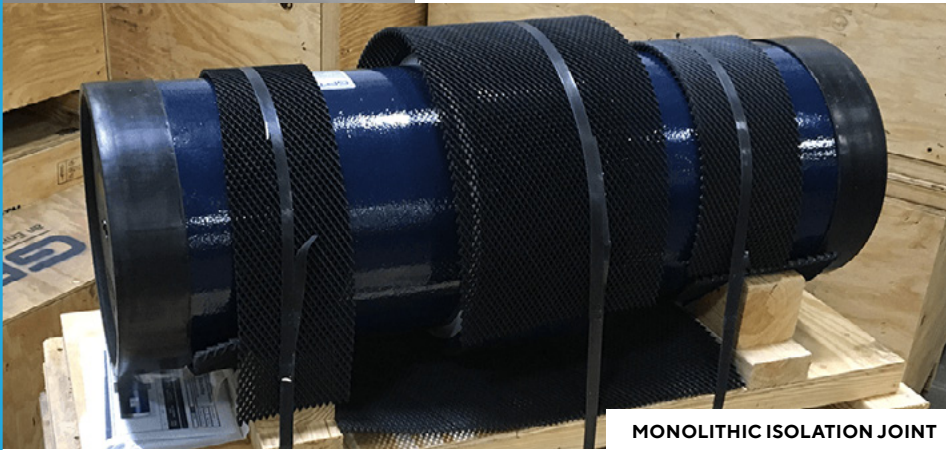


**ZD 3**

evolution



EVOLUTION(R)



MONOLITHIC ISOLATION JOINT

GPT

an EnPro Industries company

The world's leading manufacturer of critical pipeline sealing and electrical isolation products. Industrial sealing and corrosion prevention solutions for the world's pipelines with a focus on safety, performance and reliability. The EVOLUTION® is the first of its kind to be a fully encapsulated isolating gasket. The thinner, 1/8" (3mm) design minimizes the difficulties often encountered while attempting to install thicker isolating gaskets. The ElectroStop® monolithic isolation joints are a leak-proof, maintenance-free and long lasting block against the flow of electric current in all piping systems.

KERRENGINEEREDSALES.COM/GPT



blacklinesafety

REPRESENTED SINCE 2022

Connect and protect workers with the line of G7 personal gas monitors and lone worker safety devices. Notifications are immediate to enable corrective action to mitigate future hazards. Lone Worker monitors alert when a worker is in distress, with incident detection and emergency response services.

BLACKLINESAFETY.COM



G7 SAFETY DEVICES



OVER SEVENTY TWO YEARS SERVING THE INDUSTRY

Art Kerr founded the company in 1952 to represent leading manufacturers and service providers for industrial, manufacturing, power, gas and pipeline services. Three generations later, KERR's application specialists continue to provide technical expertise and service that places customers first. Kerr's reputation is unmatched in the industry for comprehensive expertise and support.

800.245.3198

- + PROJECT ANALYSIS
- + ON SITE DEMONSTRATIONS
- + PRODUCT EDUCATION
- + TECHNICAL PRESENTATIONS

KERRENGINEEREDSALES.COM  
SALES@KERRENGINEEREDSALES.COM  
PITTSBURGH, PA



SCAN ME